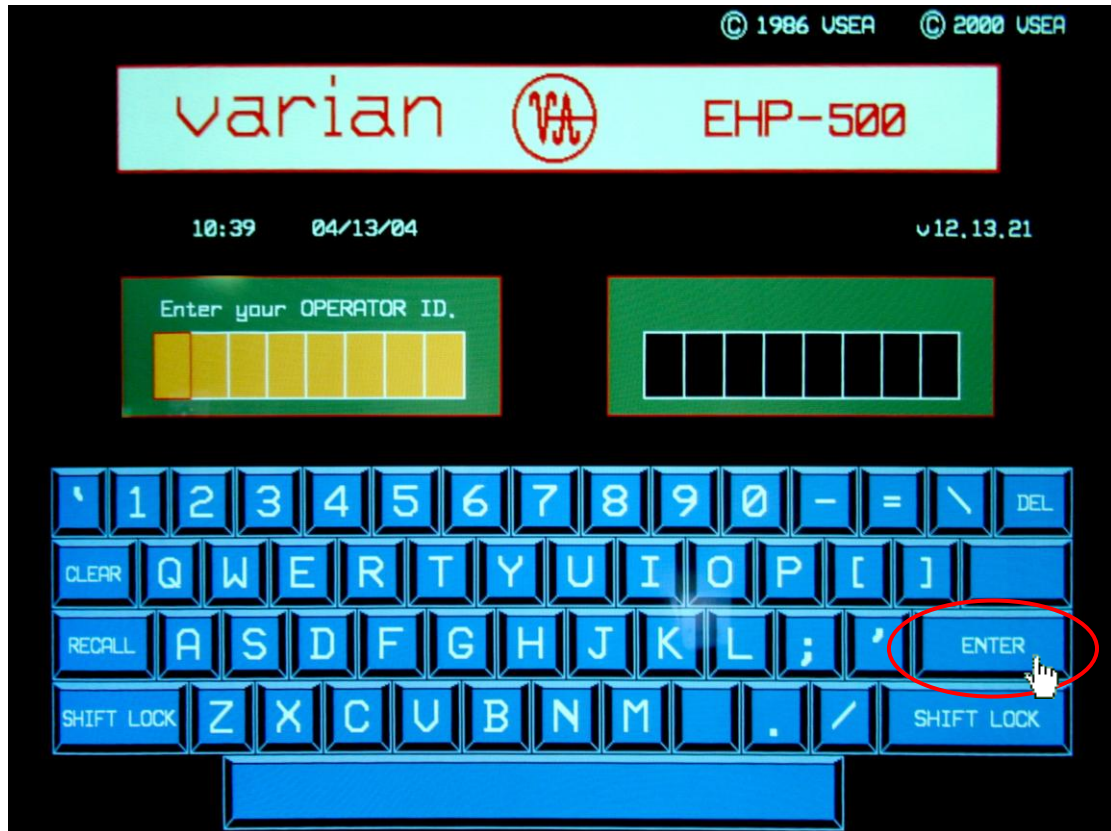


Ion Implantation System S.O.P.

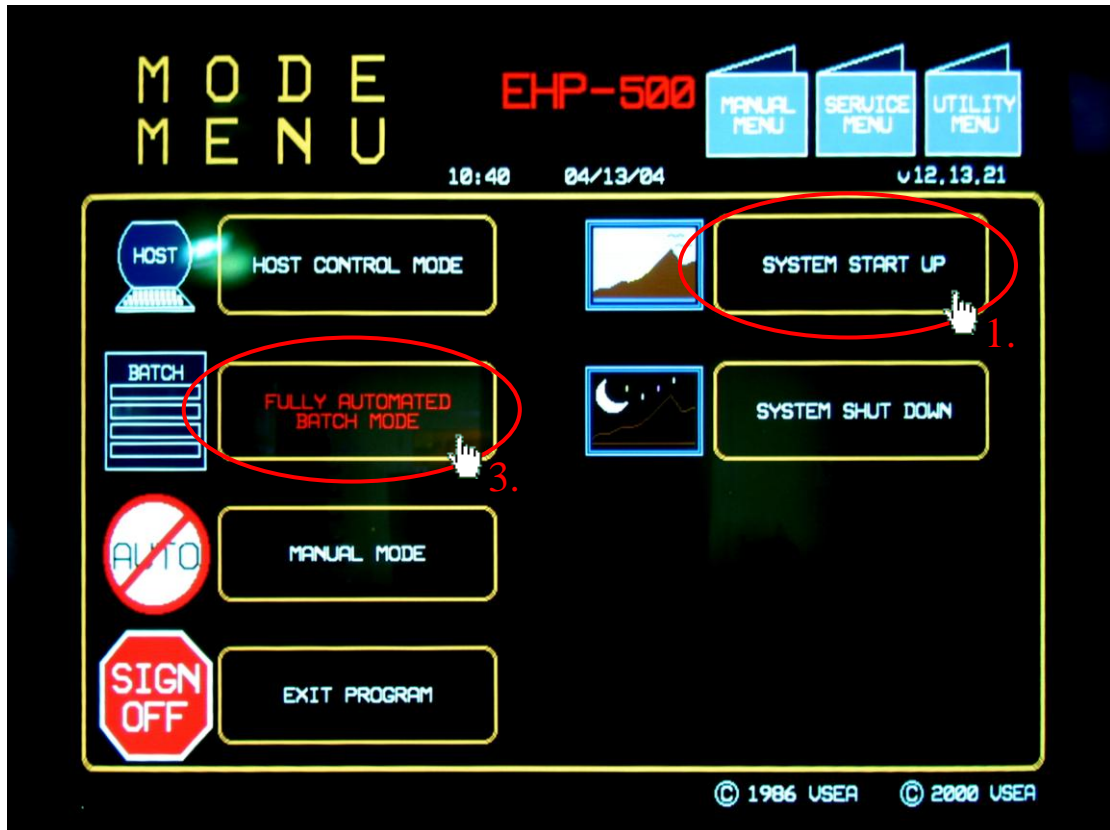
Step 1. 【Sign-On Screen (簽入畫面)】



1. The operator uses the displayed keyboard to enter ID & PASSWORD.
(When ID or PWD has been keyed in, the [ENTER] key is used to enter the code.)

操作員使用畫面上的鍵盤輸入 ID 和 密碼。(鍵入 ID 或 密碼 後，按[ENTER]輸入。)

Step 2. 【Mode Menu (模式選單)】



1. Touch the [SYSTEM START UP] to automatically check the system status.

觸點螢幕上[SYSTEM START UP]，做系統狀態自動檢查。

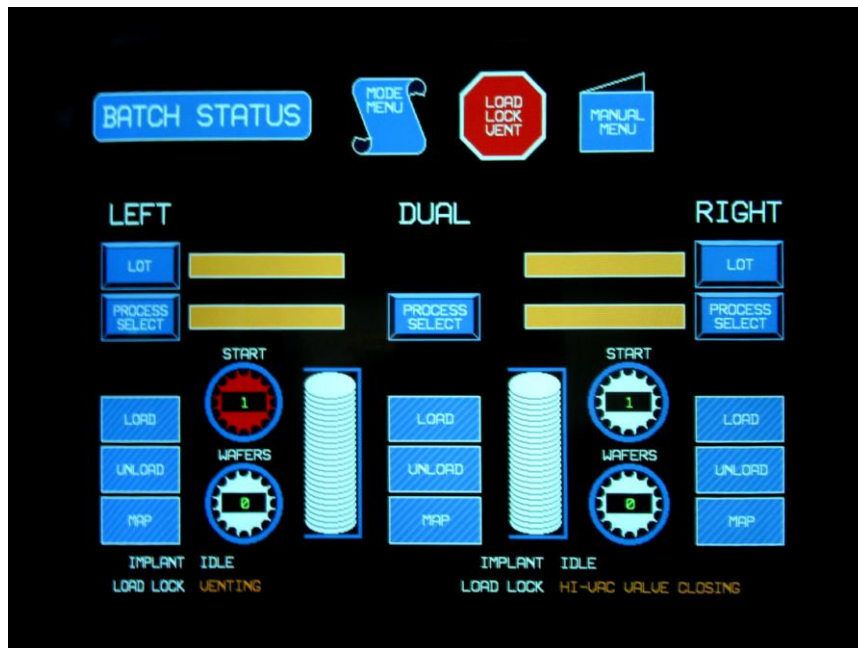
2. Wait for the system auto-check. Once the routine is finished, the system will return to the same screen (Mode Menu Screen).

等待系統自動檢查。當檢查程序完成，系統會回到同樣畫面(模式選單畫面)。

3. Touch the [FULLY AUTOMATED BATCH MODE] button on the Mode Menu Screen.

觸點模式選單畫面裡的[FULLY AUTOMATED BATCH MODE]鈕。

Step 3. 【Batch Status (批次狀態)】



1. System will vent the dual side load-lock chamber, open the door and tip the cassette holder out.

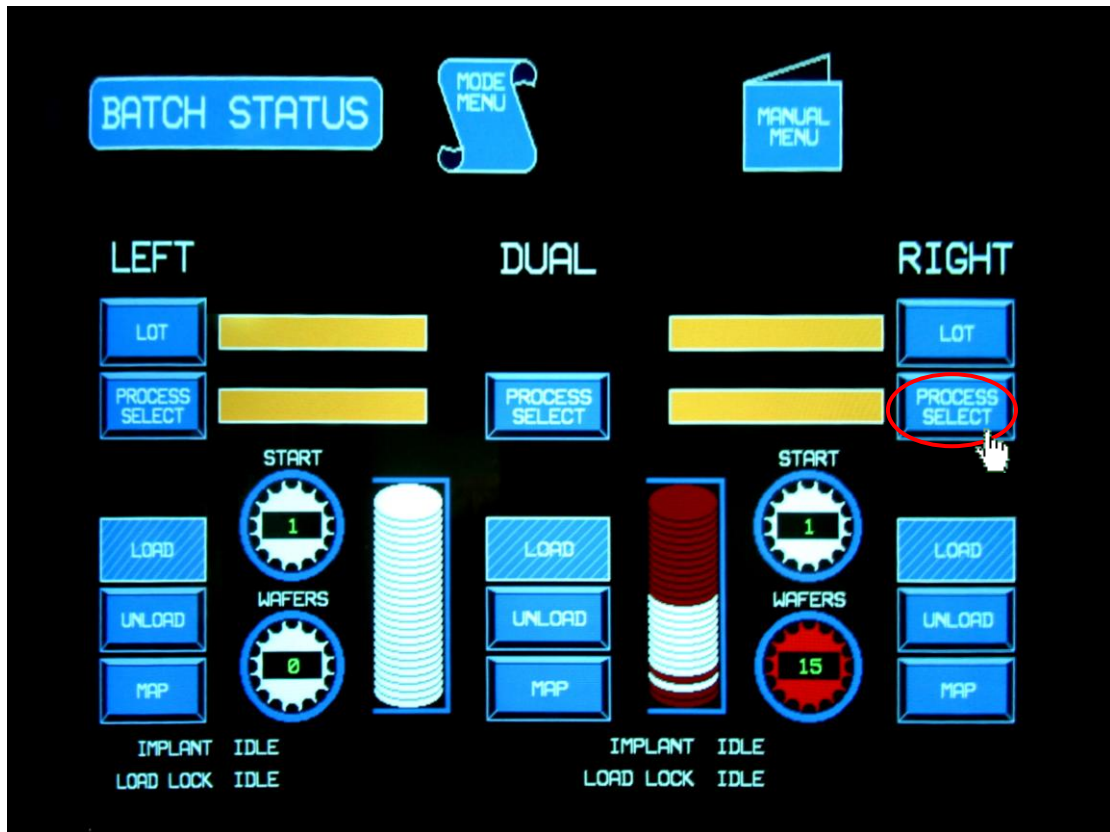
系統會將雙邊的 load-lock 腔破真空，開門並傾倒出晶片匣座。



2. Put the wafer cassette on. Touching the [LOAD] icon for either side will bring a newly loaded cassette into the load-lock chamber, close the door, begin pumping the chamber, and MAP the cassette.

放入晶片匣。觸點任一[LOAD]圖示，新晶片匣將被載入，關門，開始抽氣，和掃瞄晶片匣。

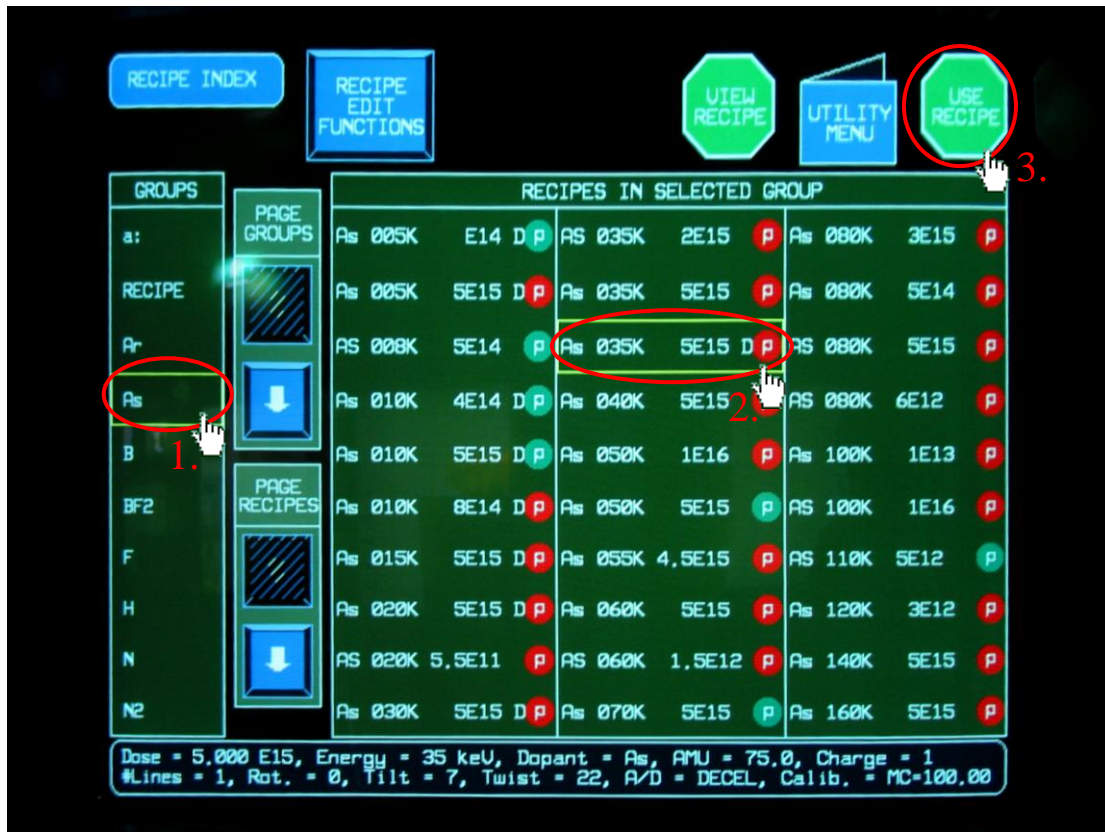
Step 4. 【Batch Status (批次狀態)】



1. Touch [PROCESS SELECT] to select recipe.

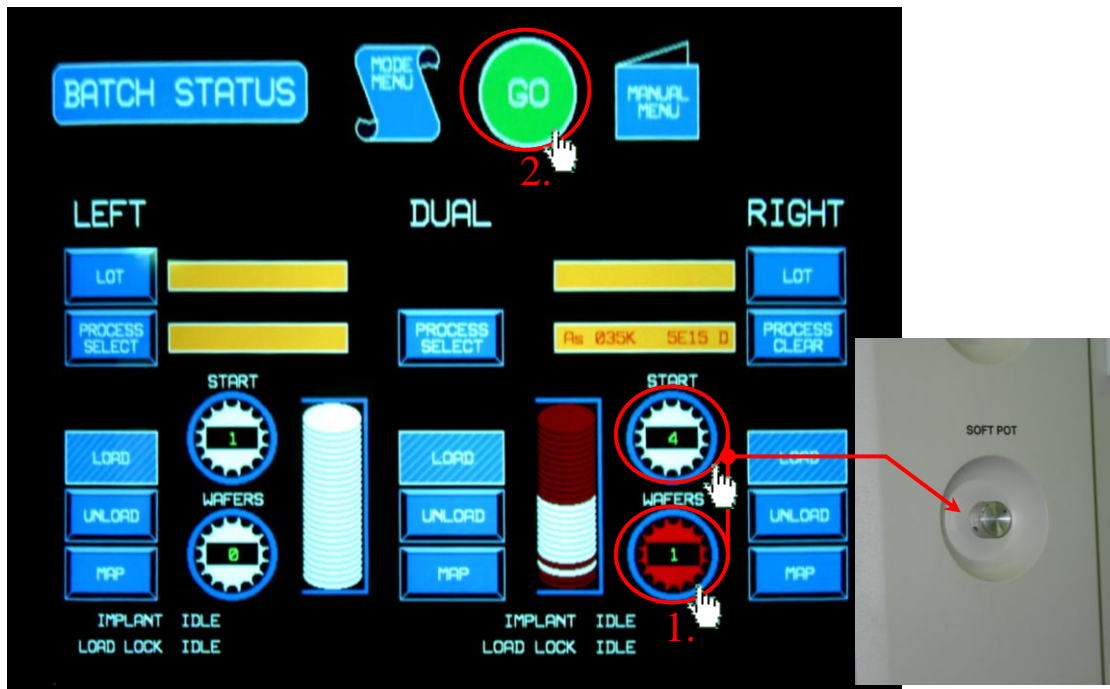
觸點[PROCESS SELECT]選擇處方。

Step 5. 【Recipe Index (處方索引)】



1. Select the recipe group.
選擇處方種類群組。
2. Select the required recipe.
選擇所需的處方。
3. Touch the [USE RECIPE] icon to load the selected recipe.
觸點[USE RECIPE]載入所選的處方檔。

Step 6.



1. Select the [START] and [WAFERS] icons and co-operate with SOFT POT to identify which wafers to implant.

選[START]和[WAFERS]圖示，搭配 SOFT POT 操作，設定欲佈植的晶片。

2. Final check! If selections are all right, touch the [GO] button. The system will start auto-tune, then implant.

最後檢查！若選項皆正確，觸點[GO]按鈕。系統將開始自動調整，然後佈植。

Step 7.

1. When the implant is finished, take the wafer cassette off, and then touch the [LOAD] icon.

當佈植完成，取出晶片卡匣，然後觸點[LOAD]圖示。

2. Return to Mode Menu Screen, select [SYSTEM SHOT DOWN] (or [SIGN OFF]).

回到 模式選單畫面，選[SYSTEM SHOT DOWN] (或[SIGN OFF])。